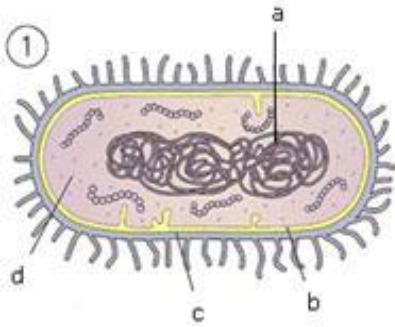


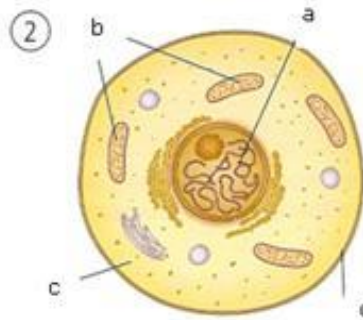
READING ACTIVITIES

3.1. Identify every one of the following cells and name the indicated structures:



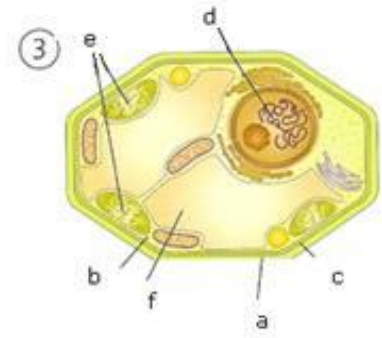
1. PROKARYOTIC CELL

- a. Genetic material
- b. Plasmatic membrane
- c. Cell wall
- d. Cytoplasm



2. EUKARYOTIC ANIMAL CELL

- a. Nucleus (Genetic material)
- b. Organelles (Mitochondria)
- c. Cytoplasm
- d. Plasmatic membrane



3. EUKARYOTIC PLANT CELL

- a. Cell wall
- b. Cytoplasm
- c. Plasmatic membrane
- d. Nucleus (Genetic material)
- e. Chloroplasts
- f. Vacuole

3.2. Indicate if the following sentences are referent to *animal cells*, *plant cells* or *both*:

- a. They have *mitochondria*, the organelles which produce energy.....Both
- b. They have *ribosomes*, little organelles that make proteins.....Both
- c. They have a big *vacuole* that occupies the most part of the cytoplasm.....Plant cells
- d. They have *plasmatic membrane*, which controls the pass of substances.....Both
- e. They have *chloroplasts*, which allow the photosynthesis.....Plant cells
- f. They have *cellular wall*, a rigid structure located outside.....Plant cells
- g. They have nucleus that contains the inheritance information.....Both

3.3. Answer these questions:

- a. Is there any multicellular organism made up of prokaryotic cells?

No, there is not any multicellular organism made up by prokaryotic cells. This type of cells is exclusive of bacteria, which are unicellular organisms.

- b. What organelles are exclusive of plant cells?

Organelles that are exclusive of plant cells are a **cellular wall** of cellulose and **chloroplasts**.